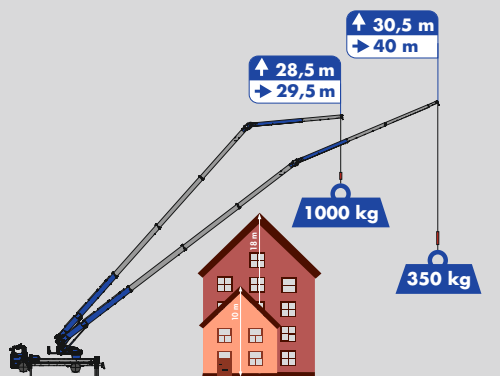


K1003



- Hook Height 52.25 m / Boom length 54 m
- Max. capacity 6,000 kg
- 30 m Working range with 1,000 kg
- Hydraulic telescopic fly jib



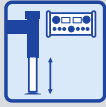
Equipment



Klaas Boom system



V-Outriggers



Automatic levelling



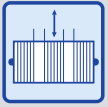
Hydraulic, telescopic fly jib



Twin luffing cylinders



Double derricking cylinders



Telescopic winch



Continuous rotation



Crane control system



XL Radio remote control



Hybrid drive



Extendable counterweight



Full panelling



Personal safety mode



Working platform (opt.)



Accessory fix system (opt.)



Mounting-/glass hook (opt.)

Technical specifications

Hook load (stand./opt.)	3.0/6.0 t
Hook height	52.25 m
Boom Length	54.00 m
Outrigger width (min.)	3.04 m
Outrigger width (max.)	5.94 m
Winch Capacity	3,000 kg
Boom (3,000 kg - 1,000 kg)	6.61 - 15.45 m

Extension 3 (350 kg)	18.39 m
Truck * Total weight (min.)	≥ 22.00 t

*depending on truck type

Working range*

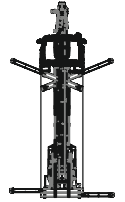
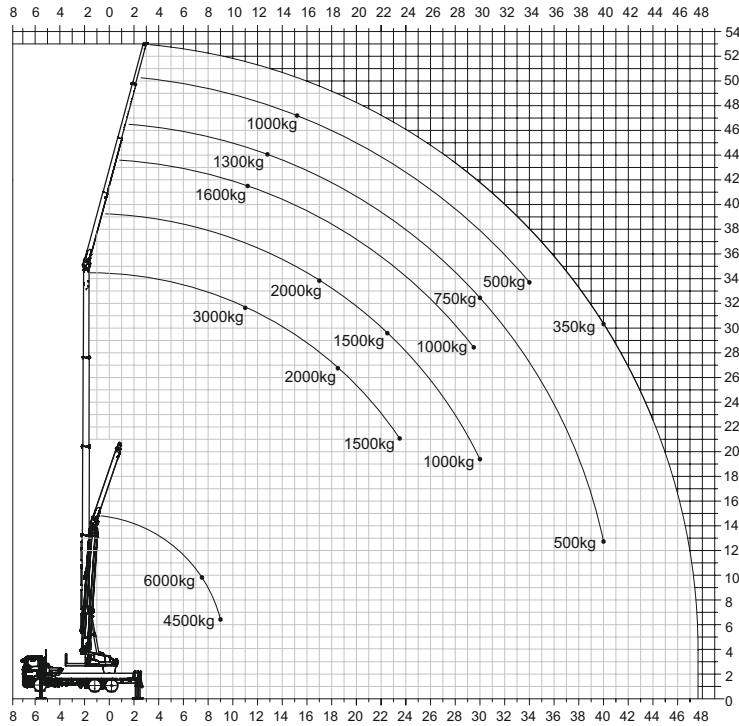
Load	Working range	Height
3,000 kg	11.00 m	31.50 m
2,000 kg	18.50 m	26.80 m
1,000 kg	30.00 m	19.50 m
350 kg	44.00 m	30.50 m

Working range 6t Capacity**

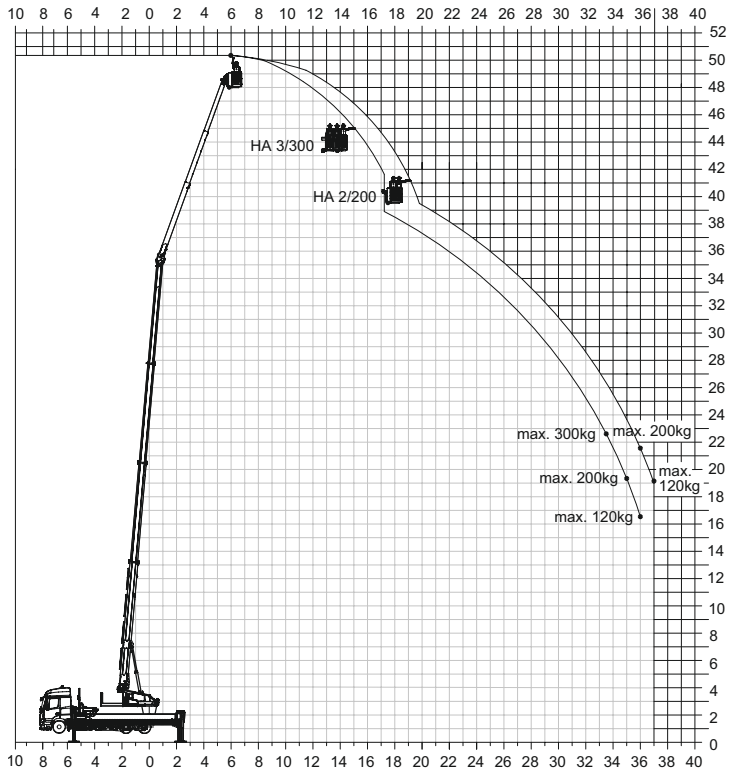
Load	Working range	Height
6,000 kg	7.50 m	10.00 m
4,500 kg	9.00 m	6.50 m

**with 2-fall instead

Working range diagram*



Platform operation*



*Working range vary, depending on truck type.

Subject to technical changes. All specifications are approximate and depending on truck type. Changes to the functions and services are reserved. The information reflects the device performance at the time of printing.